



DIETER'S
Our Reputation is Stainless!

INTERNATIONAL

**OUT WORK.
OUT PLAY.
OUT DRIVE.
OUT LAST.
OUT SHINE.**

VOLUME XIII

304
STAIN-
LESS
STEEL

CONTENTS

HX Series	5-14
LT Series	15-20
HV Series	21
MV Series	22
Additional Accessories	23-31
Lights, Bezels & Wire Harness	4

CUSTOMER SERVICE CONTACT

TOLL FREE:
1-877-884-8555

EMAIL US AT:
inquiries@dietersaccessories.com

ONLINE AT:
www.dietersaccessories.com



[panelite_by_dieters](https://www.instagram.com/panelite_by_dieters)




www.facebook.com/PaneliteByDieters

 **DIETER'S**
Our Reputation is Stainless!

**CRAFTED IN
NORTH AMERICA**

2 YEAR WARRANTY ON ALL PRODUCTS

**OUT WORK.
OUT PLAY.
OUT DRIVE.
OUT LAST.
OUT SHINE.**



Our truck accessories don't just belong in show-and-shines; they belong on the interstates and back roads of North America.

Accessories that improve the look and driving experience of a customized truck. From the front of the truck with fender guards, bug deflectors, license plate holders, to the cab and windows with kick panels, door window shades, to the rear of the truck with frame fillers, rear window guards and light boxes - all of our offerings visually enhance the truck, while also improving the overall experience for the driver.

High-quality stainless steel accessories provide more benefits than just improved appearance as these accessories are functional and protective improvements as well.

Dieter's products are made with the highest quality materials through an IATF 16949/ISO 14001 certified, state of the art manufacturing processes and therefore carry the most robust warranty in the industry.

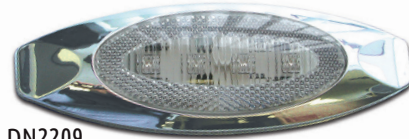




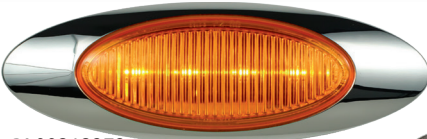
DN2208



DN2211



DN2209



PL00212373



PL00212722*



PL00212916*



DN2214



PL00212218*



PL00212912*



DN2196



DN2194

CHROMED PLASTIC LIGHT BEZELS

Add that finished chrome look to your lights.

2" ROUND WITHOUT VISOR - SOLD INDIVIDUALLY	DN2191
6" OVAL WITH VISOR - SOLD INDIVIDUALLY	DN2203
M1 BEZEL ONLY - SOLD IN QUANTITIES OF 10	PL00212380*
M3 BEZEL ONLY - SOLD IN QUANTITIES OF 10	PL00212219*
M5 BEZEL ONLY - SOLD IN QUANTITIES OF 10	PL00212725*

LIGHT TYPES

With chrome bezel. Hardware included. Sold individually.

X2AG2 LED	
AMBER (X2AG2)	DN2208
RED (X2RG2)	DN2211
AMBER CLEAR (X2ACG2)	DN2206
RED CLEAR (X2RCG2)	DN2209

X3AG2 LED	
AMBER (X3AG2)	DN2214
RED (X3RG2)	DN2217
AMBER CLEAR (X3ACG2)	DN2212
RED CLEAR (X3RCG2)	DN2215

2" ROUND STARBURST LED - PLASTIC CHROME BEZEL NOT INCLUDED	
AMBER	DN2196

With chrome bezel. Hardware included. Bulk pack of 10, individually packaged for retail.

M1 LED - .180 BULLETS & BEZEL	
M1 AMBER LED	PL00212373*
M1 AMBER CLEAR LED	PL00212375*
M1 RED LED	PL00212382*
M1 RED CLEAR LED	PL00212379*

M3 LED - .180 BULLETS & BEZEL	
M3 AMBER LED	PL00212215*
M3 AMBER CLEAR LED	PL00212216*
M3 RED LED	PL00212220*
M3 RED CLEAR LED	PL00212218*

M5 LED - .180 BULLETS & BEZEL	
M5 AMBER LED	PL00212721*
M5 AMBER CLEAR LED	PL00212722*
M5 RED LED	PL00212723*
M5 RED CLEAR LED	PL00212724*

3/4" ROUND LED - .180 BULLETS & BEZEL	
3/4" ROUND AMBER LED	PL00212912*
3/4" ROUND AMBER CLEAR LED	PL00212913*
3/4" ROUND RED LED	PL00212914*
3/4" ROUND RED CLEAR LED	PL00212915*

3/4" ROUND LED - .180 BULLETS WITH GROMMET (FOR USE IN UNDERLIT PRODUCT)	
3/4" ROUND AMBER CLEAR LED	PL00212916*
3/4" ROUND RED CLEAR LED	PL00212917*

CONTINUOUS WIRING

Bulk wiring harness by the roll. Available in 6" spacing (200 plugs) or 12" spacing (100 plugs).

6" PLUG SPACING (200 PLUGS)	DN2205
12" PLUG SPACING (100 PLUGS)	DN2204



CLOSE UP OF PLUGS

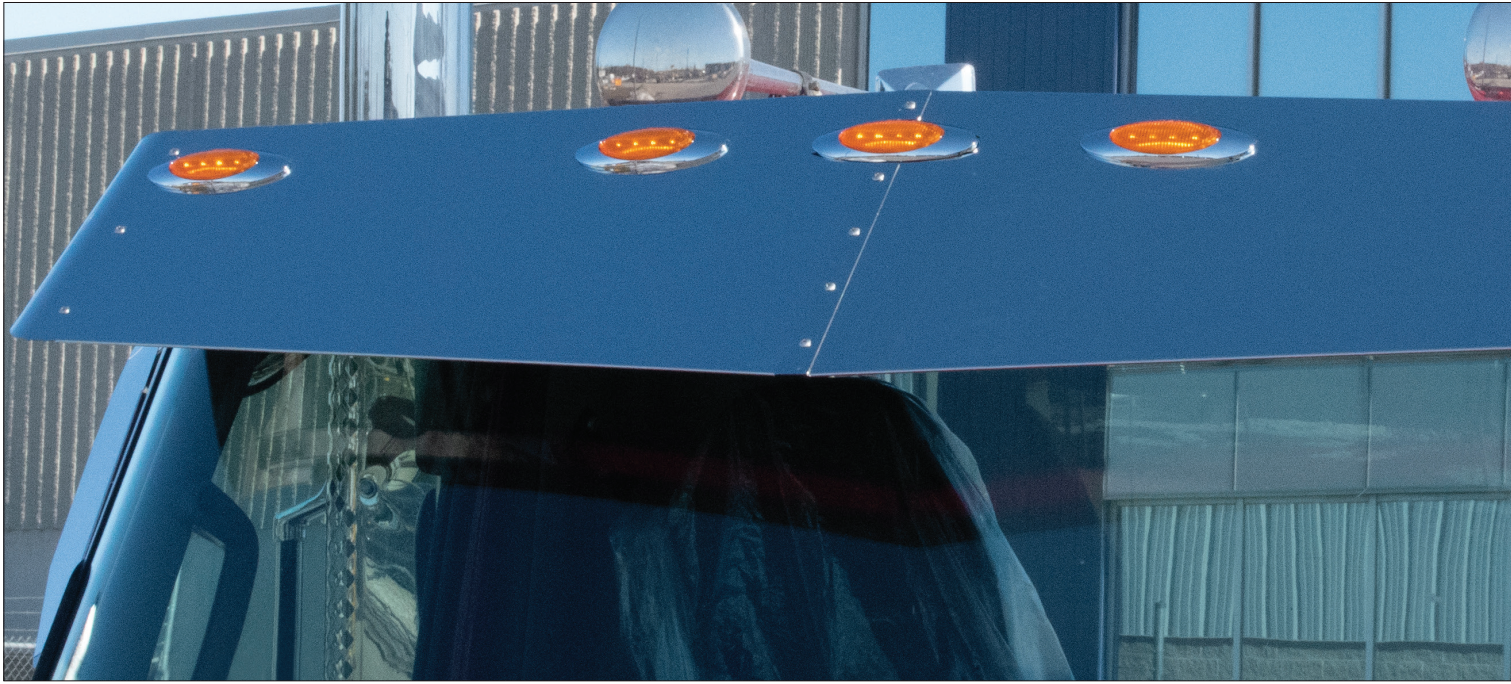


*Available under the Panelite brand, through direct ship program. www.panelite.com



H
X
S
E
R
I
E
S





DN2541 WITH DN2391

BUG DEFLECTORS

Helps protect the hood and windshield from rocks and road debris. Mounts behind grille. Drilling of mounting holes required. All mounting hardware included. Constructed of high-quality 304 stainless steel. LIFETIME



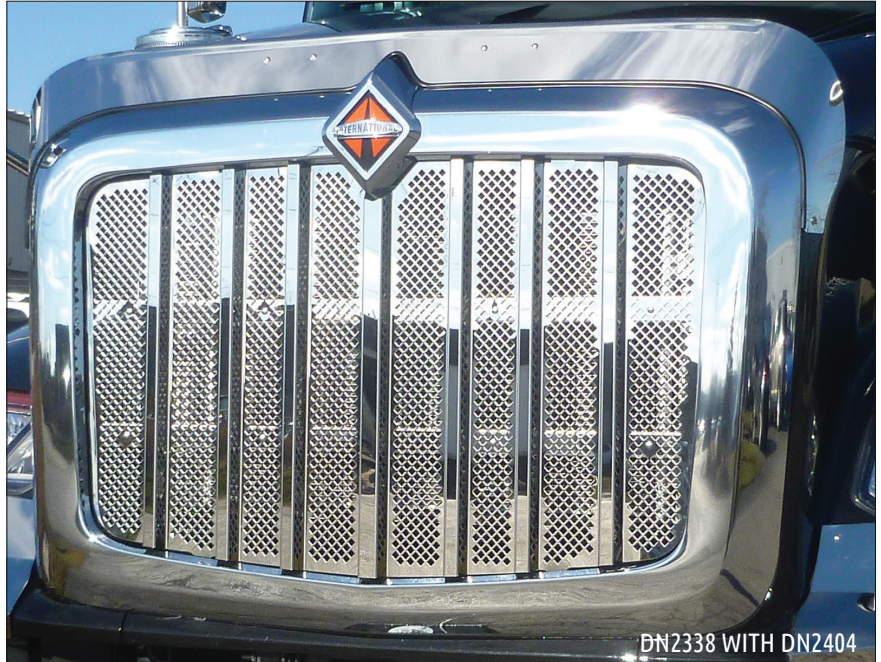
GUARANTEE AGAINST BREAKAGE.

2022+ HX520	DN2541
2016+ HX615, HX620 (BUILT IN HOOD TILT HANDLE)	DN2338
2016-2021 HX520	DN2006

FRONT GRILLE

Add the bold look of chrome to the entire front grille. One piece mirror finish 304-stainless steel replaces the OEM grille. Cutouts are in the International diamond shape. Sold individually. Hardware included.

HX520	DN2391
HX620 & HX615	DN2404



DN2338 WITH DN2404

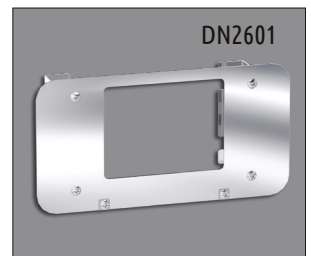


DN2580

LOWER FRONT GRILLE GUARD

Fills the gap between the lower grille and the bumper. Adding a layer of protection. Manufactured from high-quality 304 stainless steel. Features a punched design in the shape of the International logo.

2022+ HX520	DN2580
2022+ HX620	DN2579
2022+ HX520 - BUMPER FILLER PANEL. HOLDS 1 LICENSE PLATE	DN2601





DN2583

SUNVISORS

There are lots of places you want to soak in the sun - but your cab isn't one of them. Our extended sunvisors help keep the cab cooler while reducing eye strain. OEM replacement. Made of durable stainless steel. Utilizes existing factory brackets. Hardware included.

2022+ HX520, HX620 14.9" DEEP, X2AG2 LED LIGHTS (5)	DN2241
2022+ HX520, HX620 14.9" DEEP, X2AC2 LED LIGHTS (5)	DN2242
2022+ HX520, HX620 14.9" DEEP, OEM LIGHT HOLES (5)	DN2260*
2022+ HX520, HX620 14.9" DEEP, M1 AMBER LED LIGHTS (5)	DN2583
2022+ HX520, HX620 14.9" DEEP, M1 AMBER CLEAR LED LIGHTS (5)	DN2584
2016-2021 HX520/HX615/HX620, 13" FACE M1 AMBER LED LIGHTS (5)	DN2355
2016-2021 HX520/HX615/HX620, 13" FACE M1 AMBER CLEAR LED LIGHTS (5)	DN2356

*no lights included.



DN2260



DN2356



DN2337



DN2337



DN2578



DN2378

FENDER GUARDS

The best defense against road debris and the effects of high mileage wear and tear. These below headlight fender guards attach using supplied hardware. Sold in pairs.

2022+ HX520	DN2578
HX615, HX620	DN2337
2016-2021 HX520	DN2378



CAB SKIRTS

Sold in pairs. Lights and hardware included where applicable.

2022+ HX620 MODELS Installs over the OEM panels using provided hardware and 3M two-sided tape.	
2022+ HX620 MODELS - PLAIN	DN2544
2022+ HX620 MODELS - PLAIN, WITH BLOCK HEATER CUTOUT	DN2545
2022+ HX620 MODELS - M1 AMBER LED (3)	DN2546
2022+ HX620 MODELS - M1 AMBER LED (3), W/BLOCK HEATER CUTOUT	DN2547
PRE-2022 HX520 - DUAL EXHAUST Driver side has cutout for block heater. Measure 4" wide.	
PRE-2022 HX520 - PLAIN	DN2398
PRE-2022 HX520 - M1 AMBER (4) LED LIGHTS	DN2389
PRE-2022 HX520 - M1 AMBER CLEAR (4) LED LIGHTS	DN2390
PRE-2022 HX520 - M5 AMBER (6) LED LIGHTS	DN2399
PRE-2022 HX520 - M5 AMBER CLEAR (6) LED LIGHTS	DN2400
PRE-2022 HX520 - 3/4" ROUND AMBER (8) LED LIGHTS	DN2401
PRE-2022 HX520 - 3/4" ROUND AMBER CLEAR (8) LED LIGHTS	DN2402
PRE-2022 HX520 - UNDERLIT 3/4" ROUND AMBER CLEAR (6) LED LIGHTS	DN2403
PRE-2022 HX615 - DUAL EXHAUST	
PRE-2022 HX615 MODELS - PLAIN	DN2351
PRE-2022 HX615 MODELS - M1 AMBER (3) LED LIGHTS	DN2350
PRE-2022 HX615 MODELS - M1 AMBER CLEAR (3) LED LIGHTS	DN2349
PRE-2022 HX615 - SINGLE EXHAUST	
PRE-2022 HX615 MODELS - PLAIN	DN2348
PRE-2022 HX615 MODELS - M1 AMBER (3) LED LIGHTS	DN2347
PRE-2022 HX615 MODELS - M1 AMBER CLEAR (3) LED LIGHTS	DN2346
PRE-2022 HX620 - DUAL EXHAUST	
PRE-2022 HX620 - PLAIN	DN2342
PRE-2022 HX620 - M1 AMBER (3) LED LIGHTS	DN2341
PRE-2022 HX620 - M1 AMBER CLEAR (3) LED LIGHTS	DN2340
PRE-2022 HX620 - SINGLE EXHAUST	
PRE-2022 HX620 - PLAIN	DN2345
PRE-2022 HX620 - M1 AMBER (3) LED LIGHTS	DN2344
PRE-2022 HX620 - M1 AMBER CLEAR (3) LED LIGHTS	DN2343



PRE-2022 HOOD EXTENSION PANELS

For pre-2022 HX520 models. Sold in pairs. Lights, harnesses and hardware included.

PLAIN	DN2392
M1 AMBER LED LIGHTS (3)	DN2387
M1 AMBER CLEAR LED LIGHTS (3)	DN2388
M5 AMBER (4) LED LIGHTS	DN2393
M5 AMBER CLEAR (4) LED LIGHTS	DN2394
3/4" ROUND AMBER (4) LED LIGHTS	DN2395
3/4" RD AMBER CLEAR (4) LED LIGHTS	DN2396
UNDERLIT 3/4" ROUND (3) LED LIGHTS	DN2397





H
X
S
E
R
I
E
S



DN2340 WITH DN2407



DN2405

PRE-2022 SLEEPER SKIRTS

For both pre-2022 HX520 and pre-2022 HX620 models. Will not fit 2022+ models. Sold in pairs. For 51" sleepers with extenders. Lights, harnesses and hardware included.

PRE-2022 HX520/HX620 51" SLEEPERS WITH EXTENDERS	
PLAIN	DN2405
M1 AMBER (4) LED LIGHTS	DN2406
M1 AMBER CLEAR (4) LED LIGHTS	DN2407
M5 AMBER (6) LED LIGHTS	DN2408
M5 AMBER CLEAR (6) LED LIGHTS	DN2409
3/4" ROUND AMBER (8) LED LIGHTS	DN2410
3/4" ROUND AMBER CLEAR (8) LED LIGHTS	DN2411
UNDERLIT 3/4" ROUND AMBER (8) LED LIGHTS	DN2412



DN2405

AIR CLEANER LIGHT BARS

Lights, harnesses and hardware are included. Designed to be used with air cleaner fairing/shroud. Sold in pairs.

2022+ HX520 - FRONT	
2022+ HX520 - M3 AMBER LED (6)	DN2586
2022+ HX520 - M3 AMBER CLEAR LED (6)	DN2590
2022+ HX520 - M5 AMBER LED (5)	DN2556
2022+ HX520 - M5 AMBER CLEAR LED (5)	DN2560
2022+ HX520 - 3/4" ROUND AMBER LED (7)	DN2548
2022+ HX520 - 3/4" ROUND AMBER CLEAR LED (7)	DN2552
2022+ HX520 - REAR	
2022+ HX520 - M3 RED LED (6)	DN2587
2022+ HX520 - M3 RED CLEAR LED (6)	DN2591
2022+ HX520 - M5 RED LED (5)	DN2557
2022+ HX520 - M5 RED CLEAR LED (5)	DN2561
2022+ HX520 - 3/4" ROUND RED LED (7)	DN2549
2022+ HX520 - 3/4" ROUND RED CLEAR LED (7)	DN2553
2022+ HX620 - FRONT	
2022+ HX620 - M3 AMBER LED (5)	DN2588
2022+ HX620 - M3 AMBER CLEAR LED (5)	DN2592
2022+ HX620 - M5 AMBER LED (4)	DN2558
2022+ HX620 - M5 AMBER CLEAR LED (4)	DN2562
2022+ HX620 - 3/4" ROUND AMBER LED (5)	DN2550
2022+ HX620 - 3/4" ROUND AMBER CLEAR LED (5)	DN2554
2022+ HX620 - REAR	
2022+ HX620 - M3 RED LED (6)	DN2589
2022+ HX620 - M3 RED CLEAR LED (6)	DN2593
2022+ HX620 - M5 RED LED (5)	DN2559
2022+ HX620 - M5 RED CLEAR LED (5)	DN2563
2022+ HX620 - 3/4" ROUND RED LED (6)	DN2551
2022+ HX620 - 3/4" ROUND RED CLEAR LED (6)	DN2555
PRE-2022 HX620 & PRE-2022 HX520 - FRONT	
PRE-2022 HX620 - M3 AMBER LED (6)	DN2353
PRE-2022 HX620 - M3 AMBER CLEAR LED (6)	DN2358
PRE-2022 HX520 - M3 AMBER LED (6)	DN2382
PRE-2022 HX520 - M3 AMBER CLEAR LED (6)	DN2383
PRE-2022 HX620 & PRE-2022 HX620 - REAR	
PRE-2022 HX620 - M3 RED LED (6)	DN2354
PRE-2022 HX620 - M3 RED CLEAR LED (6)	DN2357
PRE-2022 HX520 - M3 RED LED (6)	DN2384
PRE-2022 HX520 - M3 RED CLEAR (6)	DN2385



AIR CLEANER FAIRING

Conceals the air intake hoses. Attaches to the side of the hood in front of the air cleaner. Sold in pairs. Hardware included.

2022+ HX520	DN2542
2022+ HX620	DN2543
PRE-2022 HX520	DN2010
PRE-2022 HX620	DN2359





H
X
S
E
R
I
E
S



DOOR WINDOW SHADE

Attaches using supplied 3M two-sided tape. Available for models with or without passenger side mirror. Will not fit on models with door mounted vanes or mirrors that have an "upper mount" on the door.

2022+ HX MODELS - WITH PASSENGER SIDE MIRROR	DN2574
----------------------------------------------	--------

2022+ HX MODELS - NO PASSENGER SIDE CUTOUT	DN2575
--------------------------------------------	--------



DN2574 WITH DN2374

DN2574 WITH DN2374



DN2576 WITH DN2373

WINDOW TOP CAP

Attaches using supplied 3M two-sided tape. Provides that 'chopped' look to the doors. Sold in pairs.

2022+ HX MODELS - FLAT BOTTOM	DN2576
-------------------------------	--------

2022+ HX MODELS - CONTOUR BOTTOM	DN2577
----------------------------------	--------

UNDER DOOR WINDOW TRIM

Adds that mirrored stainless steel shine under the driver and passenger side windows. Sold in pairs. Attaches using supplied 3M two-sided tape.

2022+ HX MODELS - PLAIN	DN2373
-------------------------	--------

2022+ HX MODELS - INTERNATIONAL CUTOUT	DN2374
----------------------------------------	--------



DN2577 WITH DN2373



DN2373



DN2582



DN2269 WITH DN2571

REAR OF SLEEPER TRIM PANELS

Accentuate the rear of your sleeper. Attach with supplied 3M two-sided tape.

2022+ HX520 - INTERNATIONAL ACCENT LETTERS	DN2269
2022+ HX520 MODELS - PLAIN	DN2573
2022+ HX520 MODELS - ETCHED HX	DN2572
2022+ HX520 MODELS - CUTOUT HX	DN2571

SLEEPER FAIRING EXTENSION

A stainless steel extension. Sold in pairs.

2022+ HX520 MODELS	DN2582
--------------------	--------

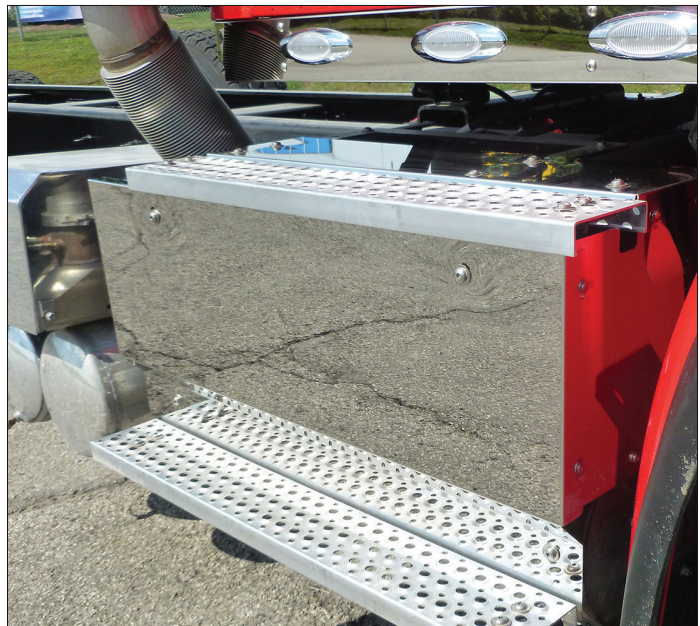


DN2245

DOOR SILL/SCUFF PLATES

Door sill/scuff plates designed for International models. Sold in pairs. Each plate measures 23.5" long by 2.5" wide by 0.25" high. Attaches using supplied 3M two-sided tape.

WITH ETCHED INTERNATIONAL	DN2245
---------------------------	--------



PRE-2022 STEP COVER

Designed for pre-2022 HX620 models passenger side. Replaces existing OEM cover with a durable stainless steel version. Sold as a set, the cover consists of front piece, side piece and back piece. Attaches using supplied hardware.

PRE-2022 HX620 STEP COVER	DN2336
PRE-2022 HX620 STEP COVER - SINGLE DPF	DN2367



H
X
S
E
R
I
E
S



DEF TANK COVER

Adds shine to the def tank on the driver side for HX520 models. Sold individually. Designed for the 9 Gallon DEF tank.

DEF TANK COVER (9 GALLON) - HX520 DN2386

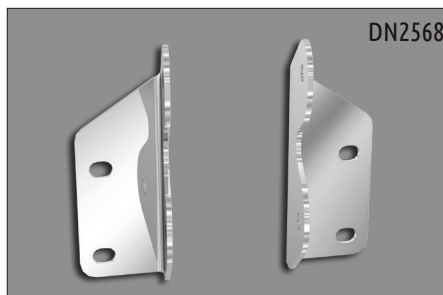
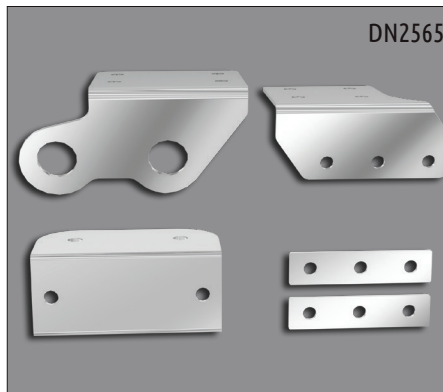


FRESH AIR INTAKE COVER

Sold individually, the stainless steel cover is designed to cover the passenger side OEM painted panel. Attaches using supplied 3M two-sided tape.

For pre-2022 models only.

PRE-2022 HX620, HX520 DN2334
- PASSENGER

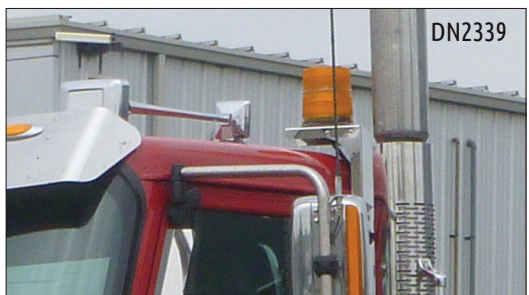
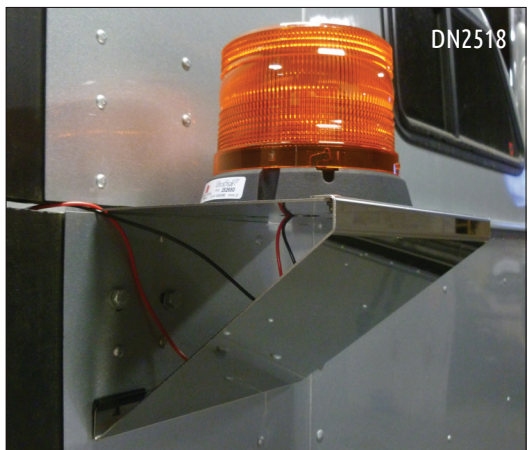


MOUNTING BRACKET REPLACEMENTS

Designed to replace OEM brackets on 2022+ HX620 models. Constructed of high-quality 304 stainless steel. Requires hardware from the truck, additional hardware included.

DRIVER SIDE EXHAUST BRACKETS (UPPER & LOWER) DN2565

PASSENGER SIDE UPPER EXHAUST DN2568



BEACON LIGHT BRACKET

Mounts to the rear portion of the cab roof. Light bracket made of durable 304 non-magnetic, non-directional stainless steel to stand up against the elements. Hardware and light not supplied.

2022+ HX DAYCAB MODELS - SOLD IN PAIRS DN2566

PRE-2022 HX615, HX515, HX620, HX520 - SOLD INDIVIDUALLY DN2339

PRE-2022 EXTENDERS HX615, HX515, HX620, HX520 - SOLD INDIVIDUALLY DN2518



DN2352



DN2197

UNDER BUMPER MOUNT SWING PLATE

High quality 304-stainless 18-gauge bumper face swing plate. Holds 1 license plate. Tag bezel and hardware included. Sold individually.

HX615, HX620

DN2197

HX615, HX620 MODELS - 37" WIDE, TAPERED ENDS

DN2352



DOOR WINDOW DEFLECTOR

The door window deflectors measure 20.5" x 3.25" wide. No hardware is required, attaches using supplied 3M two-sided tape. Sold in pairs.

PRE-2022 HX SERIES MODELS

DN2003



CHROME CLIMATE CONTROL KNOBS

For 9000 and pre-2022 HX series models. Set of 3. Light indicator window. Replace OEM climate control knobs. Chromed plastic.

HX (PRE-2022) & 9900 SERIES

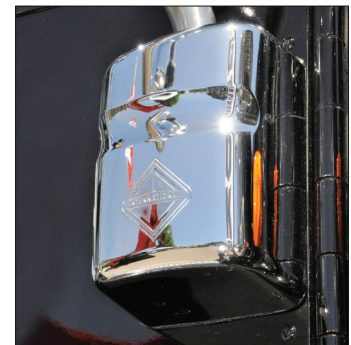
DN2247

LOWER MIRROR ARM BRACKET COVERS

Chromed plastic OEM replacement features embossed logo. Snaps in place of original cover. Sold in pairs.

PRE-2022 HX SERIES

DN2255



OUR REPUTATION IS STAINLESS!



LT
S
E
R
I
E
S



SUNVISORS

There are lots of places you want to soak in the sun - but your cab isn't one of them. Our extended sunvisors help keep the cab cooler while reducing eye strain. OEM replacement, made of durable 304-stainless steel. Some brackets included. Hardware, lights and harnesses included.

LT/RH/PROSTAR/LONESTAR/2022+ HX MODELS 14.9" DEEP, X2AG2 LED LIGHTS (5)	DN2241
LT/RH/PROSTAR/LONESTAR/2022+ HX MODELS 14.9" DEEP, X2ACG2 LED LIGHTS (5)	DN2242
LT/RH/PROSTAR/LONESTAR/2022+ HX MODELS 14.9" DEEP, OEM LIGHT HOLES (5)	DN2260*
LT/RH/PROSTAR/LONESTAR/2022+ HX MODELS 14.9" DEEP, M1 AMBER LED LIGHTS (5)	DN2583
LT/RH/PROSTAR/LONESTAR/2022+ HX MODELS 14.9" DEEP, M1 AMBER CLEAR LED LIGHTS (5)	DN2584

*no lights included.



DN2362
(PASSENGER SIDE)



DN2362
(DRIVER SIDE)



DN2361

KICK PLATES

Greatly reduces scuffs to the painted surface. Attaches using supplied 3M two-sided tape and hardware. Sold in pairs.

UPPER STEP	DN2362
LOWER STEP	DN2361



DN2242



L
T
S
E
R
I
E
S



BUG DEFLECTOR

Helps protect the hood and windshield from rocks and road debris. Mounts behind grille. Drilling of mounting holes required. All mounting hardware included. Constructed of high-quality 304 stainless steel. Built in hood tilt handle. LIFETIME GUARANTEE AGAINST BREAKAGE.

BUG DEFLECTOR (BUILT IN HOOD TILT HANDLE)

DN2363



REAR FAIRING TRIM

Help protect the paint from scuffs and scratches. Attaches to the rear portion of the fairing panel using supplied 3M two-sided tape and hardware. Sold in pairs.

LT625 REAR FAIRING TRIM

DN2379



FENDER GUARDS

The best defense against road debris and the effects of high mileage wear and tear. Below headlight fender guards, attach using supplied hardware. Sold in pairs.

LT SERIES

DN2375



BUMPER TRIM

Add stainless steel accents to the front bumper. The trim pieces follow the contour and shape of the bumper. Attaches using supplied 3M two-sided tape. Sold in a 4-piece set.

LT SERIES

DN2380

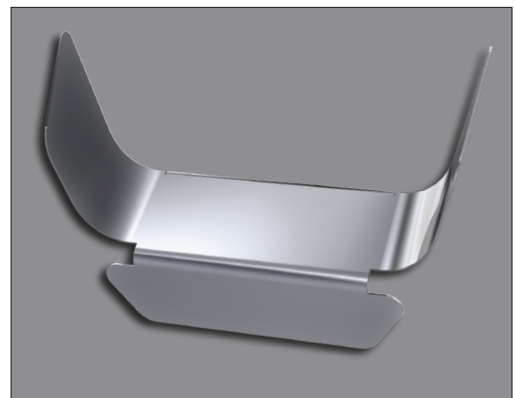


LICENSE PLATE HOLDER

Designed to hold a single plate. Attaches to the front bumper using supplied hardware. Plate bezel included. Sold individually.

SINGLE TAG

DN2368



FUEL FILLER GUARD

Attaches to the cutout area at the fuel fill location in the fairing/tank cover trim. Designed to protect the paint from scuffs and scratches. Attaches using supplied 3M two-sided tape. Sold in pairs.

FUEL FILLER GUARD

DN2381

BUNK STORAGE DOOR PANELS

Easily install to the outside of the access panel in the sleeper. Help to protect the paint from scuffs, scrapes and debris damage. Attaches using supplied hardware and 3M two-sided tape. Sold in pairs.

ETCHED LINES	DN2370
WITH CUTOUTS	DN2369
"PUSH" WITH ETCHED LINES	DN2371



REAR OF SLEEPER TRIM PANELS

Accentuate the rear of your sleeper. Attach with supplied 3M two-sided tape.

INTERNATIONAL ACCENT LETTERS	DN2269
LT MODELS - 3 PIECE INSERTS WITH ETCHED 'LT'	DN2519



REAR FRAME COVER

Add that stainless steel look and protection to the rear frame. Sold individually, the rear frame cover fastens using supplied hardware.

LT, PROSTAR & LONESTAR MODELS - PLAIN	DN2306
LT, PROSTAR & LONESTAR MODELS - ETCHED 'INTERNATIONAL'	DN2520
LT MODELS - ETCHED 'LT'	DN2519



BUMPER SCREENS

A stainless steel replacement for the OEM version. Available with or without fog light cutouts. Sold individually. Hardware included.

WITH FOG LIGHT CUTOUTS - REPLACES 4075442C1	DN2364
WITHOUT FOG LIGHT CUTOUTS - REPLACES 4075441C1	DN2365

UNDER DOOR WINDOW TRIM

Adds a stainless steel shine under the cab door windows. Sold in pairs. Attaches using supplied 3M two-sided tape.

LARGE - PLAIN	DN2360
SMALL - PLAIN	DN2373
SMALL - WITH INTERNATIONAL CUTOUT	DN2374
SMALL - WITH INTERNATIONAL ETCHED	DN2377



DN2360



DN2374



DN2377

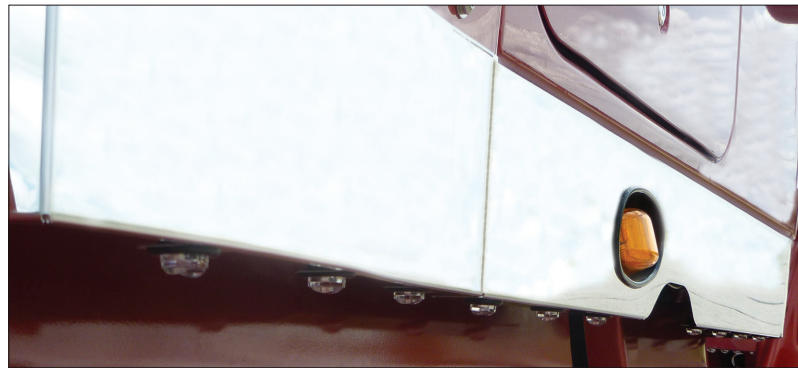


DN2372

SKIRTING KITS

Designed for the LT Series. Kit includes cab, transition, 73" sleeper and extender skirts for 22" extender. Hardware included. DN2372 also includes lights and harnesses. Sold as a set.

CAB/TRANSITION/73" SLEEPER/EXTENDER (FOR 22" EXTENDER) KIT - PLAIN (NO LIGHTS)	DN2415
CAB/TRANSITION/73" SLEEPER/EXTENDER (FOR 22" EXTENDER) KIT - UNDERLIT (5/3/7/3) 3/4" ROUND AMBER CLEAR LED	DN2372



DN2372



DN2529

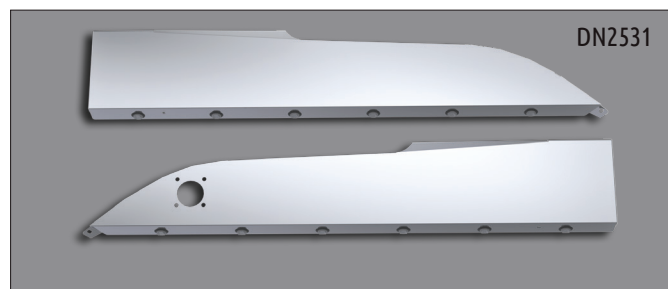


DN2530

CAB SKIRTS - LT DAYCAB

Designed for the LT daycab. Includes lights and harnesses. Sold in pairs. Driver side skirts has a block heater cutout.

LT DAYCAB - PLAIN	DN2528
LT DAYCAB - X2AG2 LED (3)	DN2530
LT DAYCAB - X2ACG2 LED (3)	DN2529
LT DAYCAB - UNDERLIT - 3/4" RD AMBER CLEAR LED (6)	DN2531



DN2531



BUG DEFLECTORS

Helps protect the hood and windshield from rocks and road debris. Mounts behind grille. Drilling of mounting holes required. All mounting hardware included. Constructed of high-quality 304 stainless steel. LIFETIME GUARANTEE AGAINST BREAKAGE.

HV MODELS - LONG HOOD WITH SLOPED HOOD DN2523

HV MODELS - LONG HOOD WITH STANDARD HOOD DN2522



CAB SKIRTS - HV MODELS

Designed for the 2018+ HV models. Sold in pairs. Driver side skirts has a block heater cutout.

2018+ HV MODELS. PLAIN - WITH BOOSTER BATTERY CUTOUT (PASSENGER SIDE) DN2524

2018+ HV MODELS. PLAIN DN2525

H
V
S
E
R
I
E
S

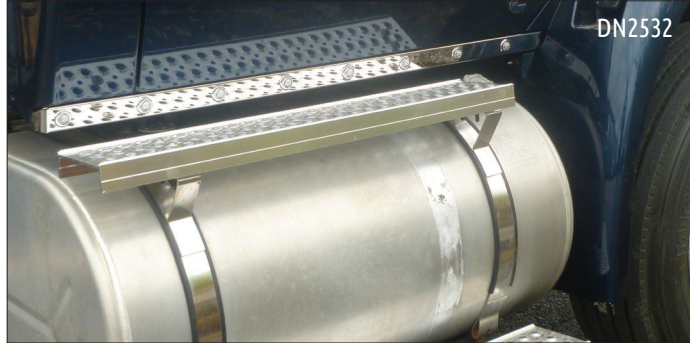
M
V
M
O
D
E
L
S

BUG DEFLECTOR

Helps protect the hood and windshield from rocks and road debris. Mounts behind grille. Drilling of mounting holes required. All mounting hardware included. Constructed of high-quality 304 stainless steel. Built in hood tilt handle. LIFETIME GUARANTEE AGAINST BREAKAGE.



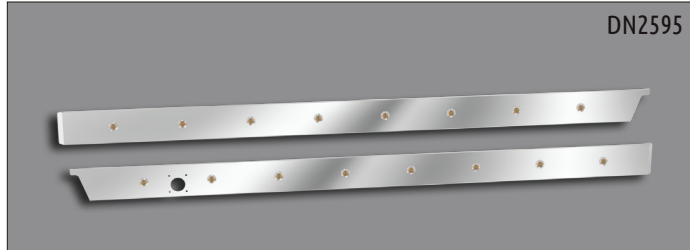
MV MODELS WITH 09WAY FRONT ENDS DN2049



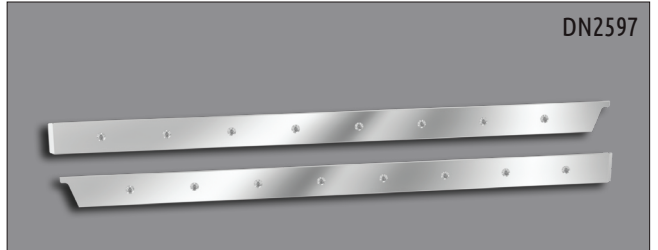
DN2532



DN2532



DN2595



DN2597

CAB SKIRTS - 2019-2022 MV EXTENDED DAYCAB MODELS

Designed for the 2019-2022 extended daycab MV models. Not designed to be used on models with the new MV hood. Sold in pairs. Lights and harnesses included where applicable.

2019-2022 MV - 3/4" ROUND AMBER CLEAR LED (8). MEASURE 1.5" WIDE	DN2532
2019-2022 MV - PLAIN. MEASURE 4" WIDE	DN2599
2019-2022 MV - PLAIN. BLOCK HEATER CUTOUT. MEASURE 4" WIDE	DN2596
2019-2022 MV - 3/4" ROUND AMBER LED (8). MEASURE 4" WIDE	DN2598
2019-2022 MV - 3/4" ROUND AMBER LED (8). BLOCK HEATER CUTOUT. MEASURE 4" WIDE	DN2595
2019-2022 MV - 3/4" ROUND AMBER CLEAR LED (8). MEASURE 4" WIDE	DN2597
2019-2022 MV - 3/4" ROUND AMBER CLEAR LED (8). BLOCK HEATER CUTOUT. MEASURE 4" WIDE	DN2594

CONTACT OUR
CUSTOMER SERVICE TEAM

inquiries@dietersaccessories.com



877-884-8555



DN2356



DN2242



DN2260



DN2052



DN2043



DN2042



DN2021



DN2013

SUNVISORS

There are lots of places you want to soak in the sun - but your cab isn't one of them. Our extended sunvisors help keep the cab cooler while reducing eye strain. OEM replacement. Made of durable stainless steel. Some brackets included. Hardware included.

9900 SERIES - SUNVISOR INSERT	DN2013
2600, 4000 & 8000 SERIES BUSINESS CLASS (1989-2002)	DN2021
4000 & 7000 SERIES 2003+	DN2042
5600i SERIES 2001+	DN2043
9900 & 5900 SERIES - 13" DEEP, OEM LIGHT HOLES	DN2050
9900 & 5900 SERIES - 13" DEEP, 5 X2AG2 LED LIGHTS	DN2052
9900 & 5900 SERIES - 13" DEEP, 5 X2ACG2 LED LIGHTS	DN2103
LT/RH/PROSTAR/LONESTAR/2022+ HX MODELS - 14.9" DEEP, M1 AMBER LED LIGHTS (5), OEM REPLACEMENT	DN2583
LT/RH/PROSTAR/LONESTAR/2022+ HX MODELS - 14.9" DEEP, M1 AMBER CLEAR LED LIGHTS (5), OEM REPLACEMENT	DN2584
LT/RH/PROSTAR/LONESTAR/2022+ HX MODELS - 14.9" DEEP, X2AG2 LED (5) LIGHTS, OEM REPLACEMENT	DN2241
LT/RH/PROSTAR/LONESTAR/2022+ HX MODELS - 14.9" DEEP, X2ACG2 LED (5) LIGHTS, OEM REPLACEMENT	DN2242
LT/RH/PROSTAR/LONESTAR/2022+ HX MODELS - 14.9" DEEP, OEM LIGHT HOLES (5), OEM REPLACEMENT	DN2260
HX (2016-2021), 9900, 5900, DURASTAR & WORKSTAR MODELS - 13" FACE, 5 M1 AMBER LED LIGHTS, OEM REPLACEMENT	DN2355
HX (2016-2021), 9900, 5900, DURASTAR & WORKSTAR MODELS - 13" FACE, 5 M1 AMBER CLEAR LED LIGHTS, OEM REPLACEMENT	DN2356



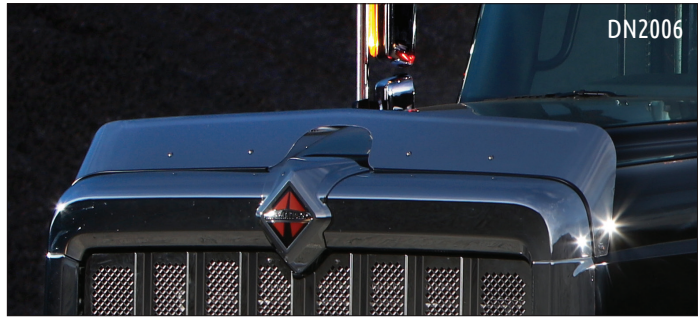
B
U
G
D
E
F
L
E
C
T
O
R
S

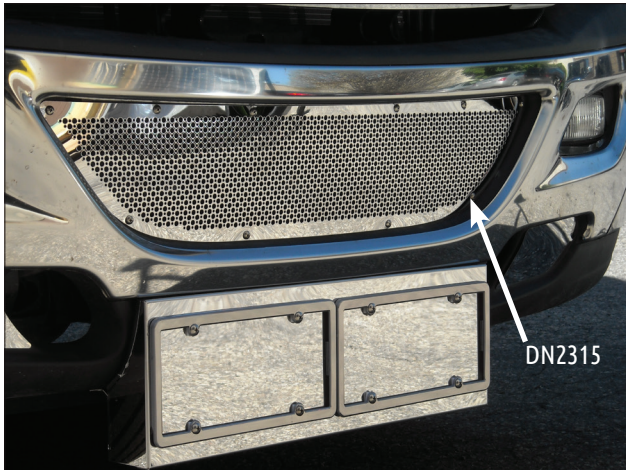
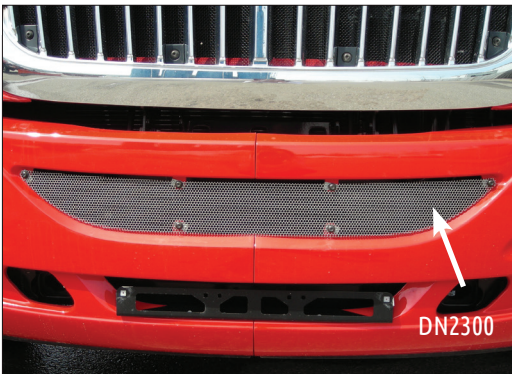
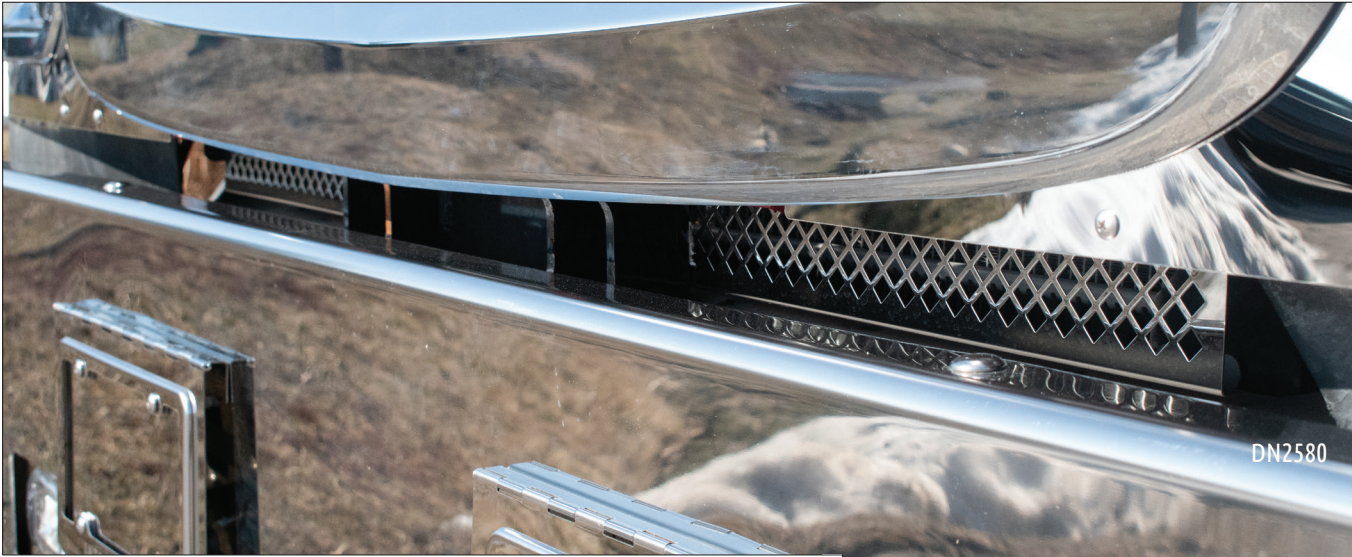
BUG DEFLECTORS

The original durable stainless steel bug deflectors. Drilling of mounting holes through the fiberglass hood is required. Provides a classy and more forgiving alternative to plastic models. **GUARANTEED FOR LIFE NOT TO BREAK, RUST OR CORRODE.**

2022+ HX520	DN2541
HX615, HX620	DN2338*
HX520 (PRE-2022), 9900 SERIES, 5900i SFA	DN2006
LT SERIES	DN2363*
9200, 9400 MODEL	DN2020
4000 SERIES 2002+, MV MODELS WITH 09WAY HOODS	DN2049*
PROSTAR	DN2261*
LONESTAR	DN2305*
HV MODELS - LONG HOOD WITH SLOPED HOOD	DN2523
HV MODELS - LONG HOOD WITH STANDARD HOOD	DN2522

*WITH BUILT IN GRAB HANDLE FOR HOOD TILTING





BUMPER SCREEN + GRILLE GUARDS

Prevents road debris from entering the engine. Hardware included.

LT SERIES - WITH FOG LIGHT CUTOUTS - REPLACES 4075442C1	DN2364
LT SERIES - WITHOUT FOG LIGHT CUTOUTS - REPLACES 4075441C1	DN2365
2022+ HX520 - LOWER GRILLE FILLER	DN2580
2022+ HX620 - LOWER GRILLE FILLER	DN2579
DURASTAR 4300 SBA 4X2 & 4400 MODELS	DN2333
PROSTAR - NEW STYLE BUMPER, 2012+	DN2315
PROSTAR - ORIGINAL STYLE BUMPER, PRE-2012	DN2300

F
E
N
D
E
R
G
U
A
R
D
S

FENDER GUARDS

The best defense against road debris and the effects of high mileage wear and tear. Sold in pairs.

9900 SERIES	DN2008
PROSTAR	DN2264
5900i SBA 121" BBC - FENDER GUARD & GRILL TRIM	DN2311*
2016+ HX615 & HX620	DN2337
LT SERIES	DN2375
2022+ HX520	DN2578
PRE-2022 HX520	DN2378

* 3 PIECE SET



DN2375



DN2264



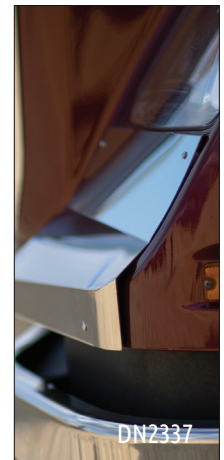
DN2008



DN2578



DN2337



DN2337



DN2378



DN2311



AIR CLEANER LIGHT BARS

Accentuates air cleaners. For use with air cleaner fairings. Lights, harnesses and hardware are included. Sold in pairs.

FRONT	
2022+ HX520 - M5 AMBER LED (5)	DN2556
2022+ HX520 - M5 AMBER CLEAR LED (5)	DN2560
2022+ HX520 - 3/4" ROUND AMBER LED (7)	DN2548
2022+ HX520 - 3/4" ROUND AMBER CLEAR LED (7)	DN2552
2022+ HX620 - M5 AMBER LED (4)	DN2558
2022+ HX620 - M5 AMBER CLEAR LED (4)	DN2562
2022+ HX620 - 3/4" ROUND AMBER LED (5)	DN2550
2022+ HX620 - 3/4" ROUND AMBER CLEAR LED (5)	DN2554
PRE-2022 HX620 - M3 AMBER LED (6)	DN2353
PRE-2022 HX620 - M3 AMBER CLEAR LED (6)	DN2358
PRE-2022 HX520 - M3 AMBER LED (6)	DN2382
PRE-2022 HX520 - M3 AMBER CLEAR LED (6)	DN2383
9900 SERIES - X3AG2 LED (6)	DN2130
9900 SERIES - X3ACG2 LED (6)	DN2131
9900 SERIES - X3AG3 LED (7)	DN2079*
9900 SERIES - X3ACG2 LED (7)	DN2105*
9900 SERIES - 2" ROUND STARBURST LED (6)	DN2145
9900 SERIES - 2" ROUND STARBURST LED (6)	DN2076*
9900 SERIES - 2" ROUND LIGHT HOLES (6)	DN2128
*TO BE USED WITH AIR CLEANER FAIRINGS/SHROUDS	
REAR	
2022+ HX520 - M5 RED LED (5)	DN2557
2022+ HX520 - M5 RED CLEAR LED (5)	DN2561
2022+ HX520 - 3/4" ROUND RED LED (7)	DN2549
2022+ HX520 - 3/4" ROUND RED CLEAR LED (7)	DN2553
2022+ HX620 - M5 RED LED (5)	DN2559
2022+ HX620 - M5 RED CLEAR LED (5)	DN2563
2022+ HX620 - 3/4" ROUND RED LED (6)	DN2551
2022+ HX620 - 3/4" ROUND RED CLEAR LED (6)	DN2555
PRE-2022 HX620 - M3 RED LED (6)	DN2354
PRE-2022 HX620 - M3 RED CLEAR LED (6)	DN2357
PRE-2022 HX520 - M3 RED LED (6)	DN2384
PRE-2022 HX520 - M3 RED CLEAR (6)	DN2385
9900 SERIES - X3RG2 LED (7)	DN2110
9900 SERIES - X3RCG2 LED (7)	DN2108
9900 SERIES - 2" ROUND STARBURST LED (6)	DN2111
9900 SERIES - 2" ROUND LIGHT HOLES (6)	DN2112

AIR CLEANER FAIRING

Conceals the air intake hoses. Attaches to the side of the hood in front of the air cleaner. Sold in pairs. Hardware included.

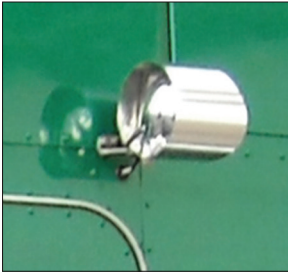
2022+ HX520	DN2542
2022+ HX620	DN2543
5900	DN2328
9900i, HX520 (PRE-2022)	DN2010
HX620 (PRE-2022)	DN2359



FRESH AIR INTAKE COVER

For International models with air intakes. Attaches using supplied hardware. Some drilling is required. Sold individually

FRESH AIR INTAKE COVER	DN2038
------------------------	--------



BACK UP LIGHT SHIELD + BRACKETS

Attaches using existing hardware. Sold in pairs.

UNIVERSAL - SHIELD (BOTH ENDS OPEN)	DN2188
-------------------------------------	--------

UNIVERSAL - BRACKETS	DN2187
----------------------	--------



LOWER MIRROR ARM BRACKET COVERS

Chromed plastic OEM replacement features embossed logo. Snaps in place of original cover. Sold in pairs.

9900 SERIES & PRE-2022 HX MODELS	DN2255
----------------------------------	--------



DN2249

REAR FRAME COVERS

Add that stainless steel look and protection to the rear frame. Sold individually, the rear frame cover fastens using supplied hardware.

9900 SERIES - OEM VERSION, ETCHED 'INTERNATIONAL'	DN2249
PROSTAR MODEL - ETCHED 'PROSTAR'	DN2265
PROSTAR, LONESTAR & LT MODELS - PLAIN	DN2306
PROSTAR, LONESTAR & LT MODELS - ETCHED 'INTERNATIONAL'	DN2520
LT MODELS - ETCHED 'LT'	DN2519
LONESTAR - ETCHED 'LONESTAR'	DN2302



DN2238



DN2360

DOOR WINDOW TRIM

Adds that mirrored stainless steel shine under the driver and passenger side windows. Sold in pairs. Attaches using supplied 3M two-sided tape.

LONESTAR, PROSTAR, 4000 & 7000 SERIES - WITH COLOR LOGO	DN2238
LT MODELS LARGE - PLAIN	DN2360
LT MODELS & 2022+ HX MODELS - SMALL - PLAIN	DN2373
LT MODELS & 2022+ HX MODELS - SMALL - WITH INTERNATIONAL CUTOUT	DN2374
LT MODELS & 2022+ HX MODELS - SMALL - WITH INTERNATIONAL ETCHED	DN2377



DN2373



DN2377



DN2374



LICENSE PLATE HOLDERS

Sold individually. Plastic license plate bezels are included. For the bumper face license plate holders, they attach using existing bumper bolts. Under bumper license plate holders are hinged to hang under the bumper.

9900 SERIES - BUMPER FACE, 2 PLATES	DN2040
UNIVERSAL - BUMPER FACE, 1 PLATE 14" WIDE X 8.45" TALL	DN2564
UNIVERSAL - HINGED UNDER BUMPER, 1 PLATE	DN2197
PROSTAR 2012+ (NEW STYLE BUMPER) - 1 PLATE	DN2316
LT SERIES	DN2368
HX615, HX620 MODELS - 37" WIDE X 10.10" TALL, TAPERED ENDS	DN2352



LICENSE PLATE BEZELS

These license plate bezels are constructed of high-quality 304 non-directional stainless steel. Features an etched logo. Make a great addition to any vehicle - personal or commercial! Sold individually or in packs of 10.

ETCHED INTERNATIONAL	DN2526
ETCHED INTERNATIONAL - 10 PACK	DN2527



DOOR WINDOW SHADES

Attaches using supplied 3M two-sided tape and hardware. Sold as a 4 piece set.

9200, 9400 & 9900 MODELS	DN2323
--------------------------	--------

Attaches using supplied 3M two-sided tape. For models with or without passenger side mirror. Will not fit on models with door mounted vanes or mirrors that have an "upper mount" on the door.

2022+ HX MODELS - WITH PASSENGER SIDE MIRROR	DN2574
----------------------------------------------	--------

2022+ HX MODELS - NO PASSENGER SIDE CUTOUT	DN2575
--------------------------------------------	--------



DOOR WINDOW DEFLECTOR

The door window deflector measures 20.5" x 3.25" wide. Attaches using supplied 3M two-sided tape. Sold in pairs.

9900 & PRE-2022 HX MODELS	DN2003
---------------------------	--------



WINDOW TOP CAP

Attaches using supplied 3M two-sided tape. Provides that 'chopped' look to the doors. Sold in pairs.

2022+ HX MODELS, 2021+ LONESTAR & LT MODELS - FLAT BOTTOM (6" WIDE)	DN2576
---------------------------------------------------------------------	--------

2022+ HX MODELS, 2021+ LONESTAR & LT MODELS - CONTOURED BOTTOM	DN2577
----------------------------------------------------------------	--------

CAB SKIRTS, SLEEPER SKIRTS + SKIRTING KITS

CAB SKIRTS - 9900 & 9400 MODELS

OEM REPLACEMENT, 33.625" LONG, BLOCK HEATER CUTOUT, PLAIN (NO LIGHTS) DN2033

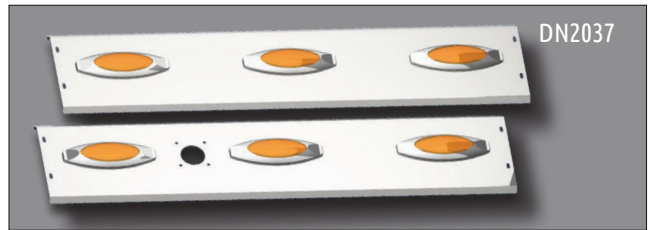
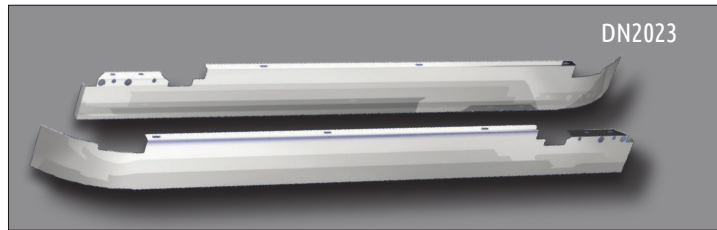
OEM REPLACEMENT, 33.625" LONG, BLOCK HEATER CUTOUT, X2AG2 LED LIGHTS (3) DN2037

OEM REPLACEMENT, 22.625" LONG, X2AG2 LED LIGHTS (3) DN2048

SLEEPER SKIRTS - 9900 MODELS WITH 72" SLEEPERS

SIDE MOUNT EXHAUST - OEM REPLACEMENT, PLAIN (NO LIGHTS) DN2023

SIDE MOUNT EXHAUST - OEM REPLACEMENT, X2AG2 LED LIGHTS (6) DN2031



DOOR SILL/SCUFF PLATES

Door sill/scuff plates designed for International models. Sold in pairs. Each plate measures 23.5" long by 2.5" wide by 0.25" high. Attaches using supplied 3M two-sided tape. Fits most International models. Will not fit 2022+ HX models.

WITH ETCHED INTERNATIONAL DN2245

CHROME CLIMATE CONTROL KNOBS

For 9000 and pre-2022 HX series models. Sold as a set of 3. Light indicator window. Replace OEM climate control knobs. Chromed plastic.

9900 SERIES & PRE-2022 HX MODELS DN2247



CENTER REAR LIGHT BOXES

For all makes. A durable mirror finish housing with lites that attaches between the frame rails. This rear frame filler holds 1 tag and has lite holes only. Measures 33.65" wide by 14" long. Tag bezel is included. Hardware is included. Lites and harnesses are not included. Back plate is made of 20-gauge stainless steel.

LIGHT HOLES DN2585

Mounts to the underside of the frame. Measures 34" wide by 15" tall. Removable rear cover. Lights are included. Hardware and some wiring supplied. Universal. Welded and polished.

WITH 4" ROUND LIGHTS DN2168

WITH 6" OVAL LIGHTS DN2169

ACCESSORIES



TRIM ACCENTS

Attach using supplied 3M two-sided tape.

EMBLEM - FLAMING EAGLE (28.9" LONG) - PAIR	DN2181
BUNK VENT COVER & RING (4.875" WIDE X 11.875" LONG) - EACH	DN2002
PROSTAR - HOOD LATCH INSERT - PAIR	DN2266
LONESTAR - FENDER WHEEL WELL TRIM - 4 PIECE KIT	DN2304

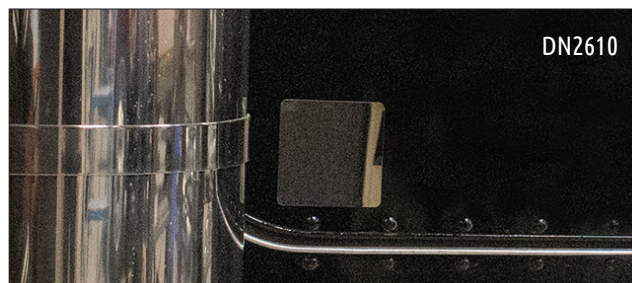


PERMIT PANELS

Apply permit stickers without marking the surface of the truck. Sold individually. Hardware not included.

HINGED - 12" WIDE X 6.06" HIGH	DN2609
4" X 4" - STICK ON	DN2610*
4" X 7" - STICK ON	DN2611*
20" X 3.5" - STICK ON	DN2612*

*ATTACHES USING SUPPLIED 3M TWO-SIDED TAPE



Questions?

Need assistance with part numbers?

inquiries@dietersaccessories.com



877-884-8555

CONTACT OUR CUSTOMER SERVICE TEAM

Item #10008460

OEM certified, owner operator approved...
Our stainless steel products are guaranteed to Outshine and Outlast.



**HIGH BAR
BRANDS**



**PREMIER
MANUFACTURING**



DIETER'S



UTIKING

dietersaccessories.com

1-877-884-8555

inquiries@dietersaccessories.com

COPYRIGHT © 2024, ALL RIGHTS RESERVED

All trademark, product names or logos cited or displayed herein are the property of their respective owners.