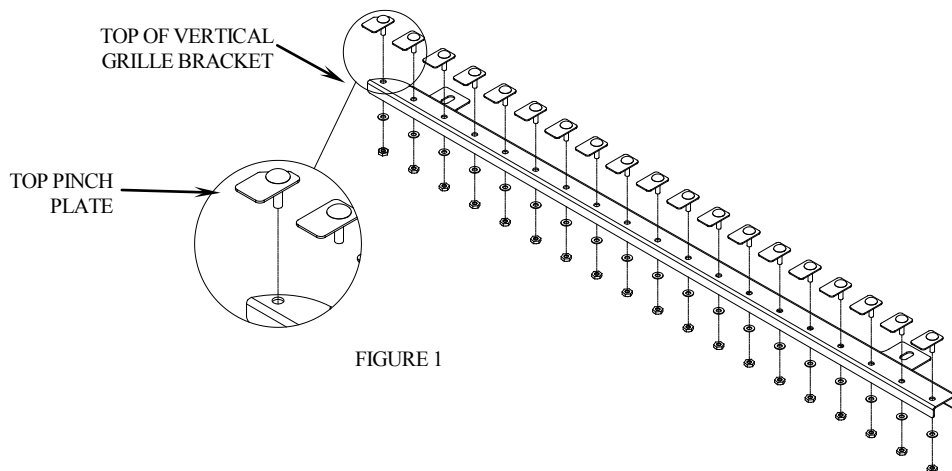


HORIZONTAL GRILLE, 4900EX WS, 2005 - REPLACES OEM GRILLE

INSTALLATION INSTRUCTIONS

1. With hood in open position, remove OEM grille, saving the 4 bolts for installation of the new stainless grille.
2. Peel plastic film from the vertical bars and from the backs of the horizontal bars.
3. Install the pinch plates onto one of the vertical brackets. Leave loose so that horizontal bars can be slipped onto the pinch plate. Ensure that the top pinch plate is in the top position on the vertical bar. (fig 1)



4. Fasten both vertical brackets to truck using the 4 bolts removed in step 1.
5. Working from top to bottom of hood, install the horizontal bars making sure each bar is centered within the grille bezel then tighten. (i.e. install 5 horizontal bars, centre and tighten. Repeat until all 19 horizontal bars are installed)
6. Peel remaining plastic off horizontal bars.
7. If necessary, clean grille with glass cleaner and a soft cloth.